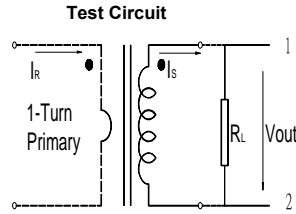
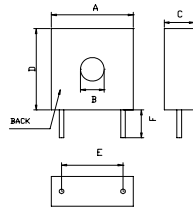
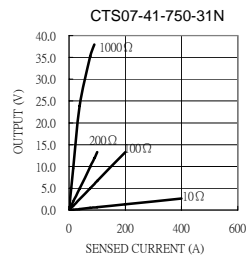
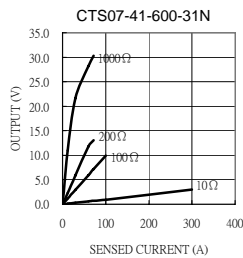
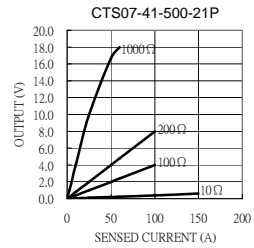
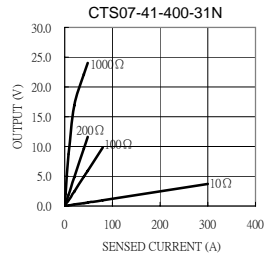
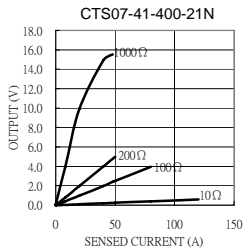
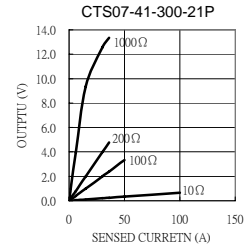
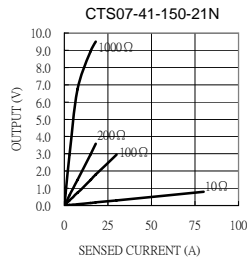
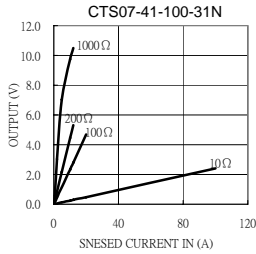


CTS07-41 Series



Electrical Characteristic										Mechanical Dimension					
Part No.	I_R (A)	V_{out} (V)	Acc.Class (%)	I_{min} (A)	I_{max} (A)	R_L (Ω)	f (%)	δ ($^{\circ}$)	DCR (Ω)	A(max)	B(max)	C(max)	D(max)	E(max)	F(± 1)
										mm / inch					
CTS07-41-100-31N	0.01~10	2.331	10	0.01	25	100	-5.880	180	15	41.05 1.616	11.92 0.469	15.2 0.598	41.25 1.624	30.21 1.189	8.5 0.334
CTS07-41-150-21N	0.01~15	1.491	0.5	0.01	35	100	-0.266	13.33	60						
CTS07-41-300-21P	0.015~30	1.994	0.2	0.015	60	100	-0.235	6.5	89						
CTS07-41-400-21N	0.02~40	1.994	0.5	0.02	90	100	-0.235	5.0	162						
CTS07-41-400-31N	0.02~40	4.921	3	0.02	90	100	-1.620	48	29						
CTS07-41-500-21P	0.025~50	1.996	0.2	0.025	115	100	-0.135	3.5	200						
CTS07-41-600-31N	0.075~60	5.953	3	0.075	120	100	-1.199	36.66	58						
CTS07-41-750-31N	0.075~75	4.967	1	0.075	210	100	-0.58	22.2	88						



Definition:

- I_R : Rated Current
- V_{out} : Output voltage.
- Acc.Class: Accuracy class.
- I_{min} : Min. detecting current which remains linearity.
- I_{max} : Max. detecting current which remains linearity.
- R_L : Load resistance.
- $f(\%)$: Ratio error.
- $\delta(^{\circ})$: Phase shift.
- DCR: Secondary Winding DC Resistance.

Remark:

1. Frequency band :50Hz~60Hz.
2. Operating temperature : -25 $^{\circ}$ C~80 $^{\circ}$ C.
3. All current ,voltage refer to rms value.
4. RoHS compliant.
5. Hi-Pot: 2500V_{RMS}/1min between windings.
6. Formula of 2nd output : $V_{out}=I_R \cdot R_L / N(\text{Turns})$.
7. Product parts meet UL requirements.