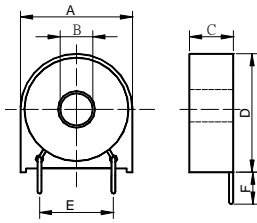
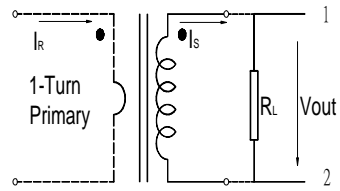


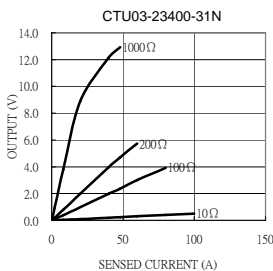
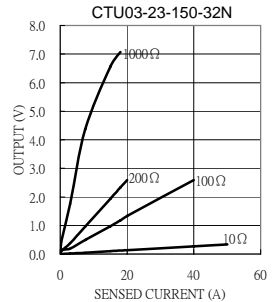
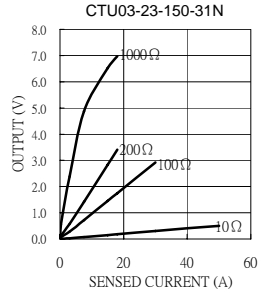
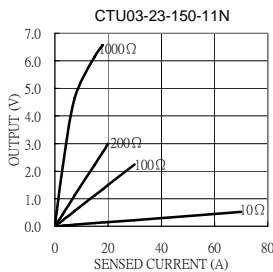
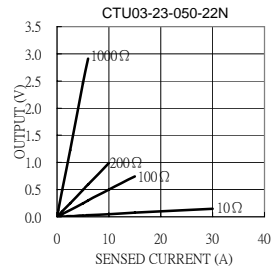
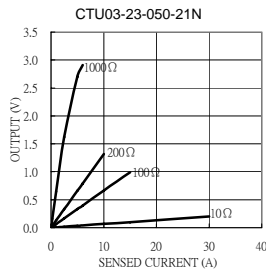
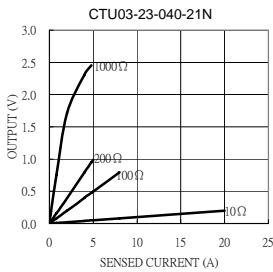
# CTU03-23 Series



Test Circuit



Electrical Characteristic										Mechanical Dimension					
Part No.	I <sub>R</sub> (A)	V <sub>out</sub> (V)	Acc.Class (%)	I <sub>min</sub> (A)	I <sub>max</sub> (A)	R <sub>L</sub> (Ω)	f (%)	δ (°)	DCR (Ω)	A(max)	B(max)	C(max)	D(max)	E(max)	F(±1)
mm / inch															
CTU03-23-040-21N	0.01~4	0.395	1	0.1	8	100	-0.575	37.5	47	23.01 0.91	7.1 0.28	8.6 0.34	24.91 0.98	15.3 0.60	10.0 0.39
CTU03-23-050-21N	0.015~5	0.331	1	0.015	15	100	-0.330	24.0	109						
CTU03-23-050-22N	0.02~5	0.248	0.5	0.02	15	100	-0.240	24.0	147						
CTU03-23-150-11N	0.01~15	1.123	1	0.01	30	100	-0.304	16.8	62						
CTU03-23-150-31N	0.05~15	1.46	5	0.05	30	100	-3.133	113.3	48						
CTU03-23-150-32N	0.075~15	0.978	3	0.075	40	100	-2.100	91.0	113						
CTU03-23-400-31N	0.1~40	1.99	3	0.1	80	100	-1.215	38.0	152						



**Definition:**

- I<sub>R</sub> : Rated Current
- V<sub>out</sub>: Output voltage.
- Acc.Class: Accuracy class.
- I<sub>min</sub>: Min. detecting current which remains linearity.
- I<sub>max</sub>: Max. detecting current which remains linearity.
- R<sub>L</sub> : Load resistance.
- f(%): Ratio error.
- δ(°): Phase shift.
- DCR: Secondary Winding DC Resistance.

**Remark:**

1. Frequency band :50Hz~60Hz.
2. Operating temperature: -25℃~80℃.
3. All current ,voltage refer to rms value.
4. RoHS compliant.
5. Hi-Pot: 2500V<sub>RMS</sub>/1min between windings.
6. Formula of 2nd output :V<sub>out</sub>=I<sub>R</sub>\*R<sub>L</sub> / N(Turns).
7. Product parts meet UL requirements.