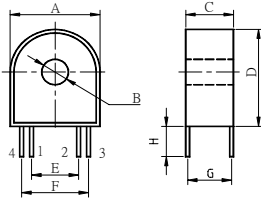
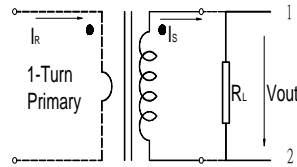


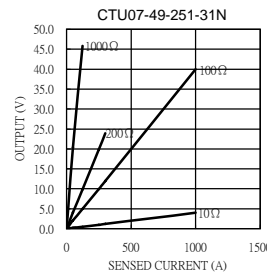
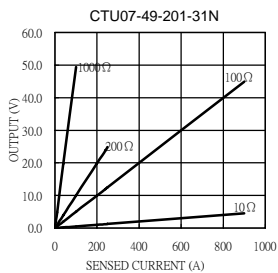
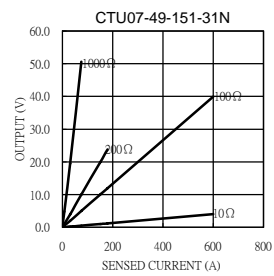
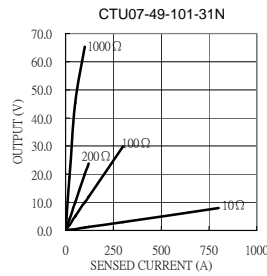
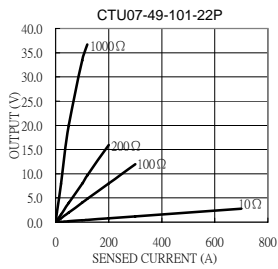
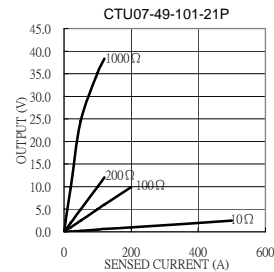
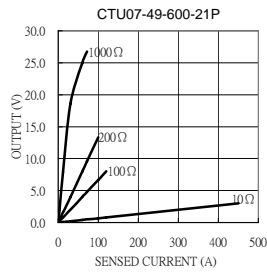
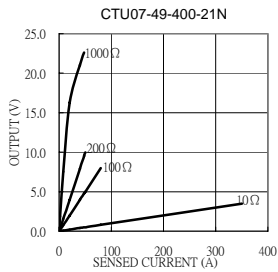
CTU07-49 Series



Test Circuit



Electrical Characteristic										Mechanical Dimension							
Part No.	I_R (A)	V_{out} (V)	Acc.Class (%)	I_{min} (A)	I_{max} (A)	R_L (Ω)	f (%)	δ (°)	DCR (Ω)	A(max)	B(max)	C(max)	D(max)	E(max)	F(max)	G(max)	H(± 1)
mm / inch																	
CTU07-49-400-21N	0.2~40	3.982	0.5	0.2	80	100	-0.005	8.3	20	49.85 1.96	18.2 0.72	20.11 0.79	55.0 2.17	29.9 1.18	37.6 1.48	19.8 0.78	6.0 0.24
CTU07-49-600-21P	0.015~60	3.995	0.2	0.015	140	100	-0.027	4.3	42								
CTU07-49-101-21P	0.1~100	5.003	0.2	0.1	200	100	-0.148	2.8	68								
CTU07-49-101-22P	0.05~100	4.001	0.1	0.05	315	100	-0.062	2.3	89								
CTU07-49-101-31N	0.05~100	9.992	1	0.05	360	100	-0.630	25.0	18								
CTU07-49-151-31N	0.15~150	9.968	0.5	0.15	660	100	-0.290	15.0	42								
CTU07-49-201-31N	0.1~200	9.958	0.5	0.1	950	100	-0.330	11.0	67								
CTU07-49-251-31N	0.075~250	9.968	0.5	0.075	1100	100	-0.143	8.7	77								



Definition:

- I_R : Rated Current
- V_{out} : Output voltage.
- Acc.Class: Accuracy class.
- I_{min} : Min. detecting current which remains linearity.
- I_{max} : Max. detecting current which remains linearity.
- R_L : Load resistance.
- $f(\%)$: Ratio error.
- $\delta(^\circ)$: Phase shift.
- DCR: Secondary Winding DC Resistance.

Remark:

1. Frequency band :50Hz~60Hz.
2. Operating temperature: -25 $^\circ$ C~80 $^\circ$ C.
3. All current ,voltage refer to rms value.
4. RoHS compliant.
5. Hi-Pot: 2500V_{RMS}/1min between windings.
6. Formula of 2nd output : $V_{out}=I_R \cdot R_L / N(\text{Turns})$.
7. Product parts meet UL requirements.